



Administration for Children and Families

Office of Community Services

**OCS Linkages to Support Water & Energy Access & Affordability:
Low Income Home Energy Assistance Program (LIHEAP)
Low Income Household Water Assistance Program
(LIHWAP) & Community Services Block Grant (CSBG)**

**Tribal Annual Meeting
May 3-5, 2022**

Presenter:

Akm Rahman

LIHEAP Program Operations Branch Chief

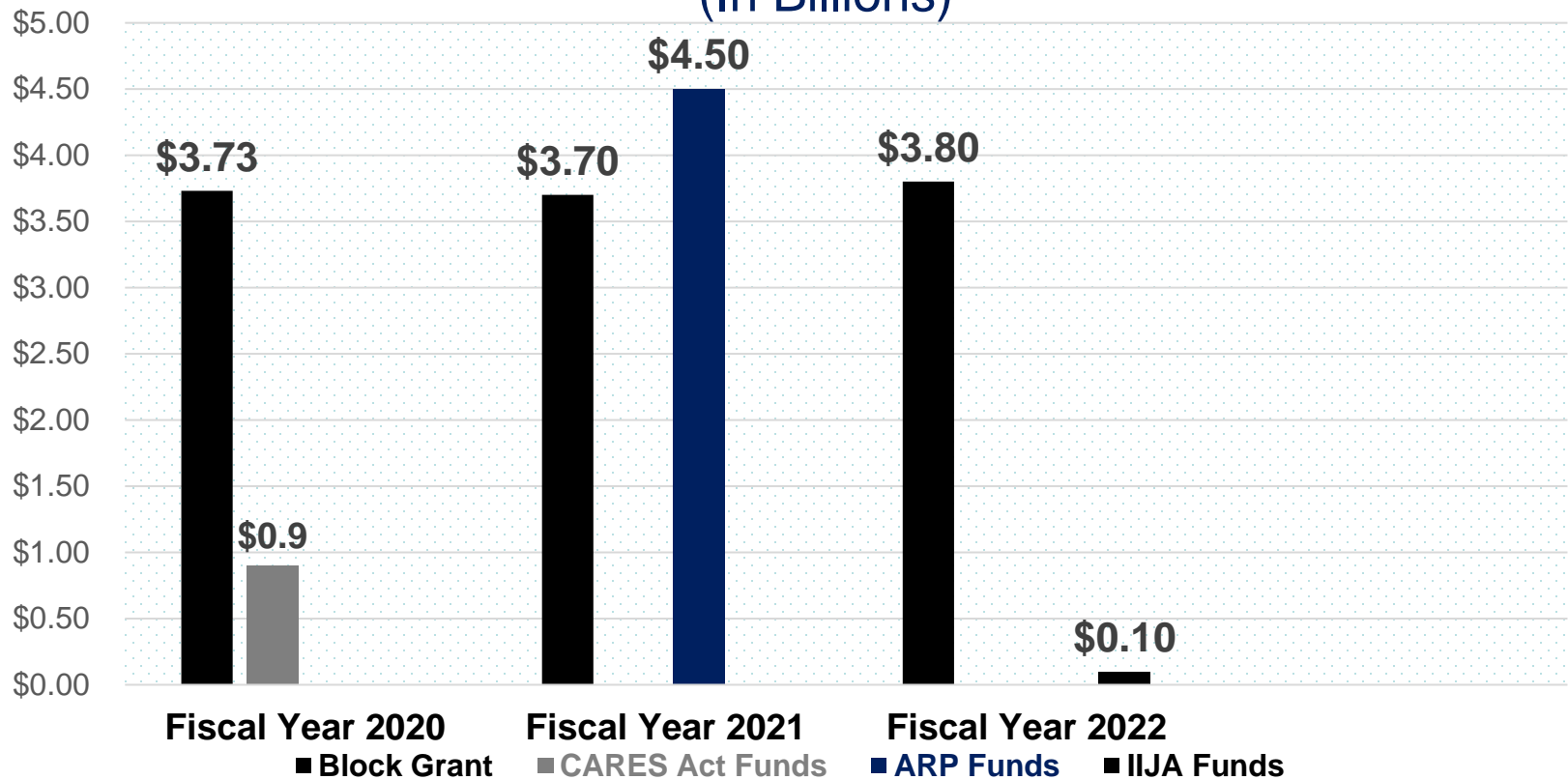
Division of Energy Assistance (DEA)



Administration for Children and Families

Office of Community Services

LIHEAP Appropriations (FY 2020 – 2022) (In Billions)





HHS Strategic Plan & Mission

- **HHS Strategic Goal 3:** Strengthen the Economic and Social Well-Being of Americans Across the Lifespan.
- **Administration for Children and Families'** mandate is to work with states and partners to promote the economic & social well-being of children, families, and communities.
- **The Low Income Home Energy Assistance Program (LIHEAP)** helps keep families safe and healthy through initiatives that assist families with energy costs.



Federal LIHEAP Statutory Flexibilities

- Connection between the mission and statutory flexibilities
- Energy burden reduction
- Benefit maximization
- Crisis & disaster management
- Wrap around services/case management



What is LIHEAP and what can it do to help tribal households?

- Heating assistance
- Cooling assistance
- Residential weatherization and minor home repairs
- Winter, summer, and year-round crisis assistance
- Natural disaster management





- **LIHEAP's Purpose**

- Help low-income households meet energy needs.
- Intervene in energy crisis situations.
- Provide low cost weatherization.

- **LIHEAP's Primary Goals**

- Provide the highest level of assistance to people with the lowest incomes who have the greatest home energy need.
- Reduce health and safety risks related to inadequate home heating and cooling.





- **Low-Income Household Eligibility**

- The federal rules permit States, Tribes, and Territory LIHEAP grantees the ability to set income eligibility for LIHEAP

- Guidelines:

- Up to the greater of 150% of Federal Poverty Level (FPL)

OR

- 60% State Median Income (SMI) (whichever greater)

- Not lower than 110% of FPL





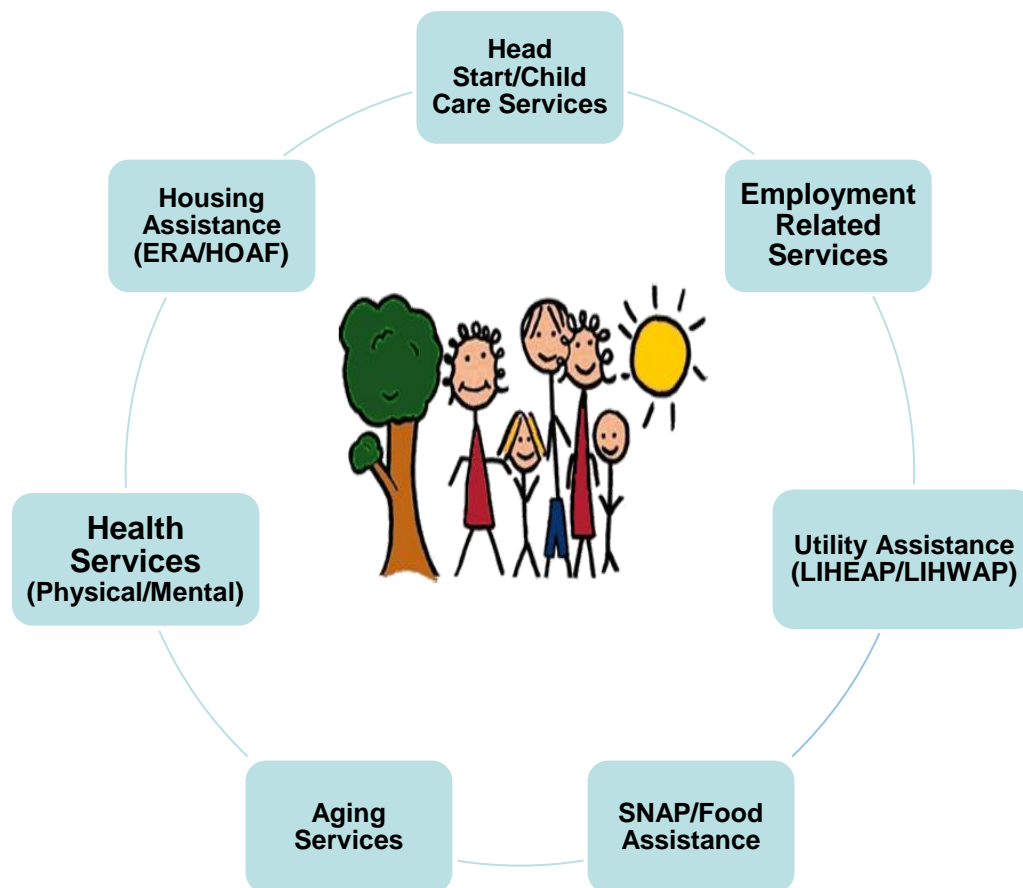
- **Categorically Eligibility**

- LIHEAP grantees also have the option to determine certain households as “categorically eligible” for LIHEAP based on the household’s participation in any combination of:

- Temporary Assistance for Needy Families (TANF)
- Supplemental Nutrition Assistance Program (SNAP)
- Supplemental Security Income (SSI)
- Specific veterans benefits



Wrap Around Services





Case Management and LIHEAP

- Can be applied to LIHEAP households with multiple needs that requires multiple wrap around services.
- Is an approach that effectively link all services to help a family that has multiple needs.
- Remind everyone about the federal LIHEAP requirement of providing highest possible benefits to households with lowest income.
- Demonstrate that this approach could be useful to LIHEAP and that we encourage the use of the approach using a combination of Assurance 16 and other funds.
- Is an allowable activity and can be funded through the Assurance 16 funds **and administrative funds (if available and defined by your own rules)**.



Federal LIHEAP Statute Section 2605(b)(16)

Assurance 16 – Efforts to Reduce Home Energy Needs

✓ *use up to 5 percent of such funds, at its option...*

✓ *provide services that encourage and enable households to reduce their home energy needs and thereby the need for energy assistance, including needs assessments, counseling, and assistance with energy vendors...*

✓ *report to the Secretary concerning the impact of such activities on the number of households served, the level of direct benefits provided to those households, and the number of households that remain unserved.*



Administration for Children and Families

Office of Community Services

Examples of Allowable Assurance 16 Activities



Energy Related Needs Assessment

- Household Assessment that includes home energy aspect
- Safety and Health Assessment



Energy Savings Information and Education

- Individual or Groups
- Materials or Interactive Learning
- Demonstrations, workshops, etc.



Outreach to Promote A16

- Newsletter; Social Media; Face to Face
- Inserts in Application Form



Incentives

- Additional benefits provided to individuals for participating



Financial Literacy and Budget Counseling

- Financial empowerment materials such as "[Your Money, Your Goals](#)"
- Vista Volunteer to help build assets



Information and Referrals

- Within LIHEAP (WX, Crisis Assistance)
- Other social services programs (CSBG, SNAP, Head Start, Etc.)



Advocacy work with Utility Vendors

- Arrearage forgiveness negotiations
- Phone Calls on behalf of household



Collaboration/with other programs

- Short and Long-Term Partnerships



Case Management

- Encompasses all of the above activities to ensure that LIHEAP households are served in a more comprehensive way and not only when they are in crisis.
- Coordinating wrap around service to meet the needs of the households.



Wrap Up – Key Takeaways

- ✓ Home Energy Benefit Maximization > LIHEAP, CSBG, the U.S. Treasury's Emergency Rental Assistance, and tribal funds.
- ✓ Crisis and Disaster Management > LIHEAP, LIHWAP, CSBG, FEMA, and tribal funds.
- ✓ Crisis management > Wrap around services > Economic Mobility.



Administration for Children and Families

Office of Community Services

References

LIHEAP Clearinghouse: In addition to housing all LIHEAP State Plans, the LIHEAP Clearinghouse provides various presentations, reports, and documentation.

OCS Website: The OCS website provides resources for LIHEAP grantees including information memoranda, Dear Colleague notices, and training materials.

LIHEAP Performance Management Website: The Performance Management website provides data and resources related to LIHEAP in each state.

LIHEAP Virtual Library: The LIHEAP Virtual Library was designed by grantees to help their peers walk through all aspects of LIHEAP program administration (including Assurance 16).

LIHEAP Tribal, State and Territory Grant Recipients, and Federal Staff Contacts list.

The LIHEAP Resource Manual: This guide offers topic by topic guidance on how to develop a policy manual.

LIHEAP Quarterly Reporting Training Webinar for Tribal Grant Recipients: This is a Youtube recording of DEA webinar on how to complete and submit the new quarterly report.

Tribal Outreach Information: This webpage includes a brief outline of tribal outreach as it relates to the LIHEAP statute and Plan.

OCS Earth Day Information: This webpage summarizes LIHEAP, LIHWAP, and RCD Earth Day information.